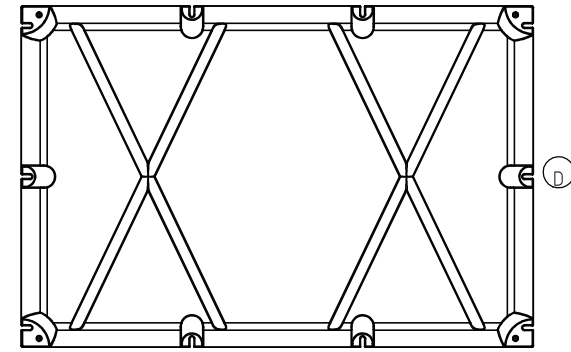
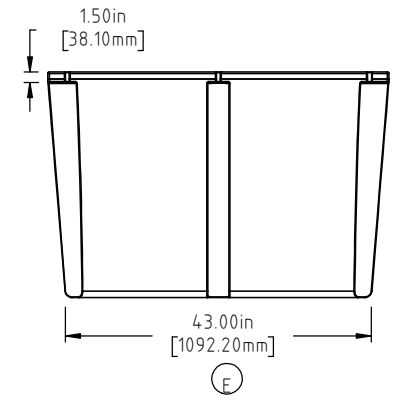
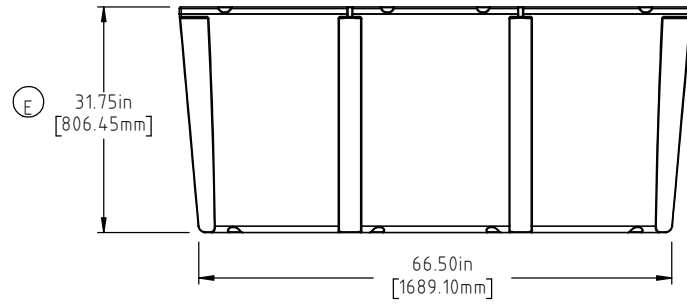
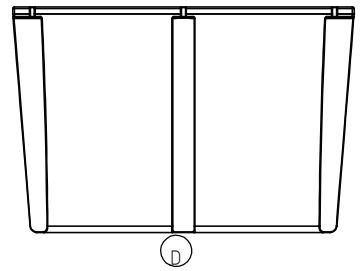
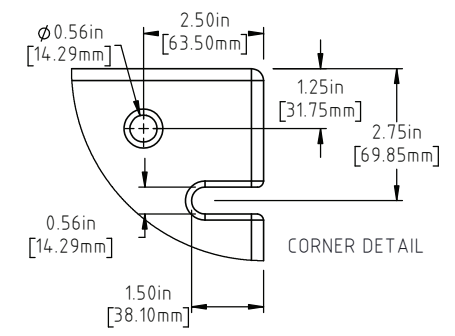
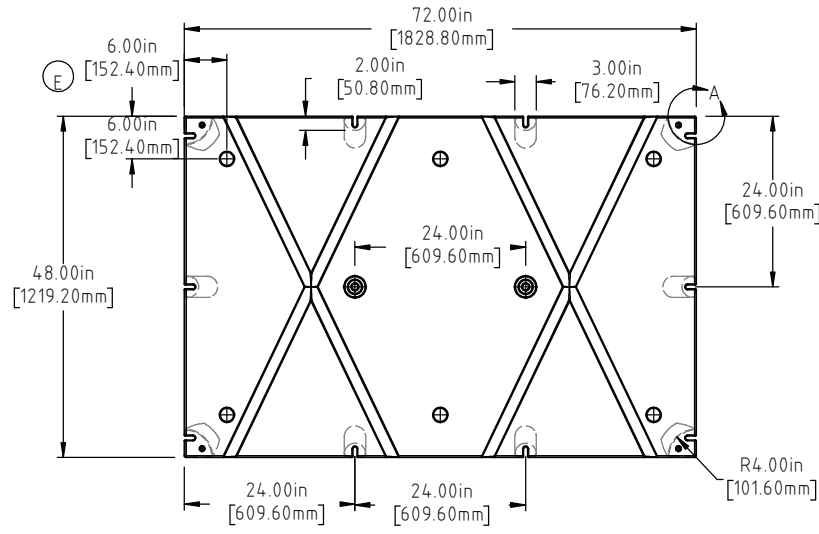


Copyright. All information furnished within this document, electronic file or design correspondence is the property of Den Hartog Industries, Inc. and shall not be used, disclosed to others or copied without the expressed written consent of Den Hartog Industries, Inc.



| | | | |
|-----|---|--------------|------|
| E | VENT/FOAMING LOCATIONS SHOWN ON PRINT. 31.75" WAS 32.00", 43.00" WAS 43.50" | ADH 11/16/16 | 3321 |
| D | BOTTOM/SIDE VIEWS ADDED TO PRINT | ADH 12/4/14 | 2971 |
| C | 154 LBS WAS 153 LBS, 3457 LBS WAS 3365 LBS | ADH 6/26/12 | 2420 |
| B | METRIC DIMENSIONS ADDED | ADH 6/23/08 | 1685 |
| A | ADD BUOYANCY NOTE | GWC 1/11/07 | |
| A | CHANGE WEIGHTS: FF WAS 172 | GWC 1/11/07 | |
| REV | DESCRIPTION | BY / DATE | CCN |

| | |
|------------------------------------|-------------------------------|
| DRAWN / DATE DEAN 9/21/95 | MATERIAL POLYETHYLENE |
| APPRD. / DATE ADH 11/6/07 | |
| SHOT WEIGHT: 95 LBS. (43.09 KG) | NOTES: (A) (C) |
| SHIPPING WEIGHT: SEE NOTES | 1.) AF 95 LBS (43.09 KG) |
| FINISH: | 2.) FF 154 LBS (69.85 KG) |
| | 3.) .150IN (3.82mm) NOM. WALL |



Den Hartog
INDUSTRIES, INC.

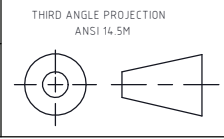
Ace Roto-Mold Injection Molding Blow Molding Sowjoy

4010 HOSPERS DRIVE S. BOX 425, HOSPERS, IOWA 51238-0425

ALL DIMENSIONS ARE IN DECIMAL INCHES TOLERANCES UNLESS OTHERWISE SPECIFIED

POLYETHYLENE

±1% @ 68°F



| | |
|-------------|--------------------|
| DESCRIPTION | 48 X 72 X 32 FLOAT |
| SCALE | N.S. |
| PART NO. | 4872-32 |