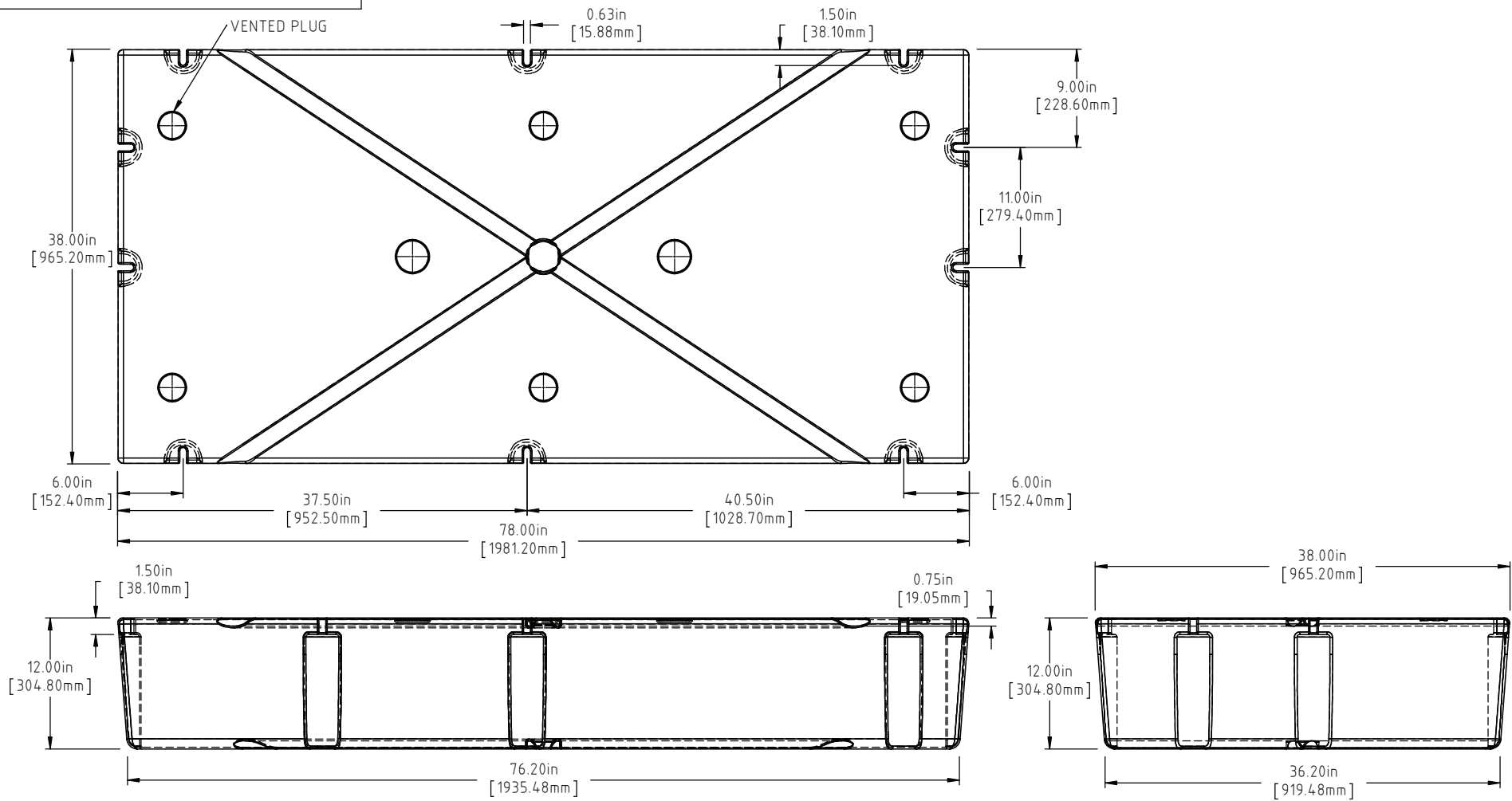


Copyright. All information furnished within this document, electronic file or design correspondence is the property of Den Hartog industries, Inc. and shall not be used, disclosed to others or copied without the expressed written consent of Den Hartog Industries, Inc.



C	76 LBS WAS 69 LBS, 1133 LBS WAS 1135 LBS	ADH 6/22/12	2420		
B	METRIC DIMENSIONS ADDED	ADH 6/18/08	1685	DRAWN / DATE REH 6/17/02	MATERIAL POLYETHYLENE
A	ADD BUOYANCY NOTE	GWC 1/9/07		APPRD. / DATE ADH 11/5/07	
A	CHANGE WEIGHT FF WAS 75	GWC 1/9/07			
REV	DESCRIPTION	BY / DATE	CCN		
ALL DIMENSIONS ARE IN DECIMAL INCHES TOLERANCES UNLESS OTHERWISE SPECIFIED		THIRD ANGLE PROJECTION ANSI 14.5M		SHOT WEIGHT: 52 LBS.(23.59 KG.)	NOTES: (A) (C) 1.) AF 52 LBS.(23.59 KG.) 2.) FF 76 LBS.(34.47 KG.)
POLYETHYLENE		METAL DECIMAL ± .125" FRACTION ± 1/4" ANGLE ± 1°		SHIPPING WEIGHT: SEE NOTES	
±1% @ 68°F				FINISH:	

(A) (C) NOTE: BUOYANCY 1133.00 LBS.(513.92 KG.)



Den Hartog
INDUSTRIES, INC.

Acra Roto-Mold Injection Molding Blow Molding Sowjoy
4010 HOSPERS DRIVE S. BOX 425, HOSPERS, IOWA 51238-0425

DESCRIPTION	38 X 78 X 12 FLOAT	
SCALE	N.S.	PART NO. 3878-12